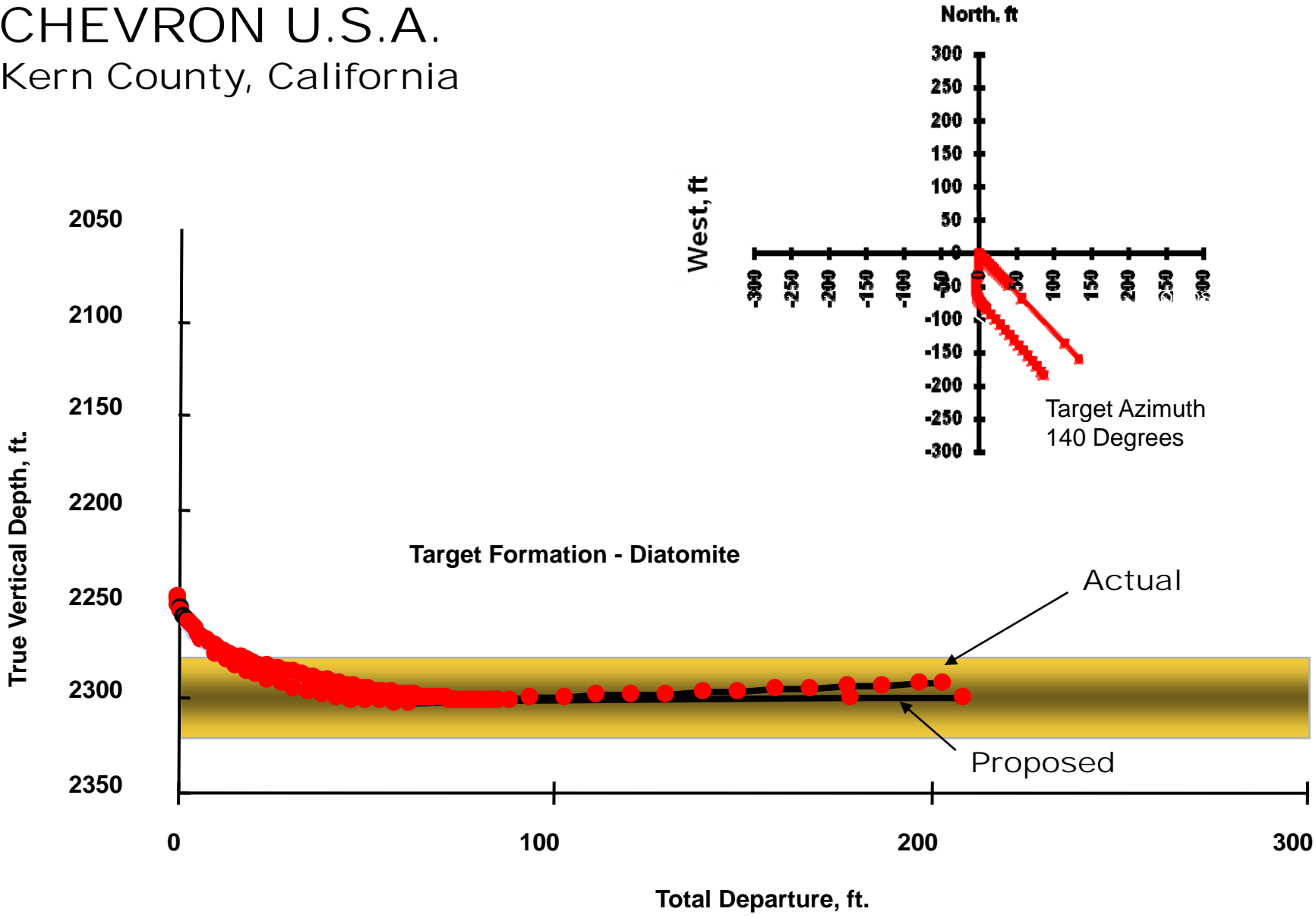
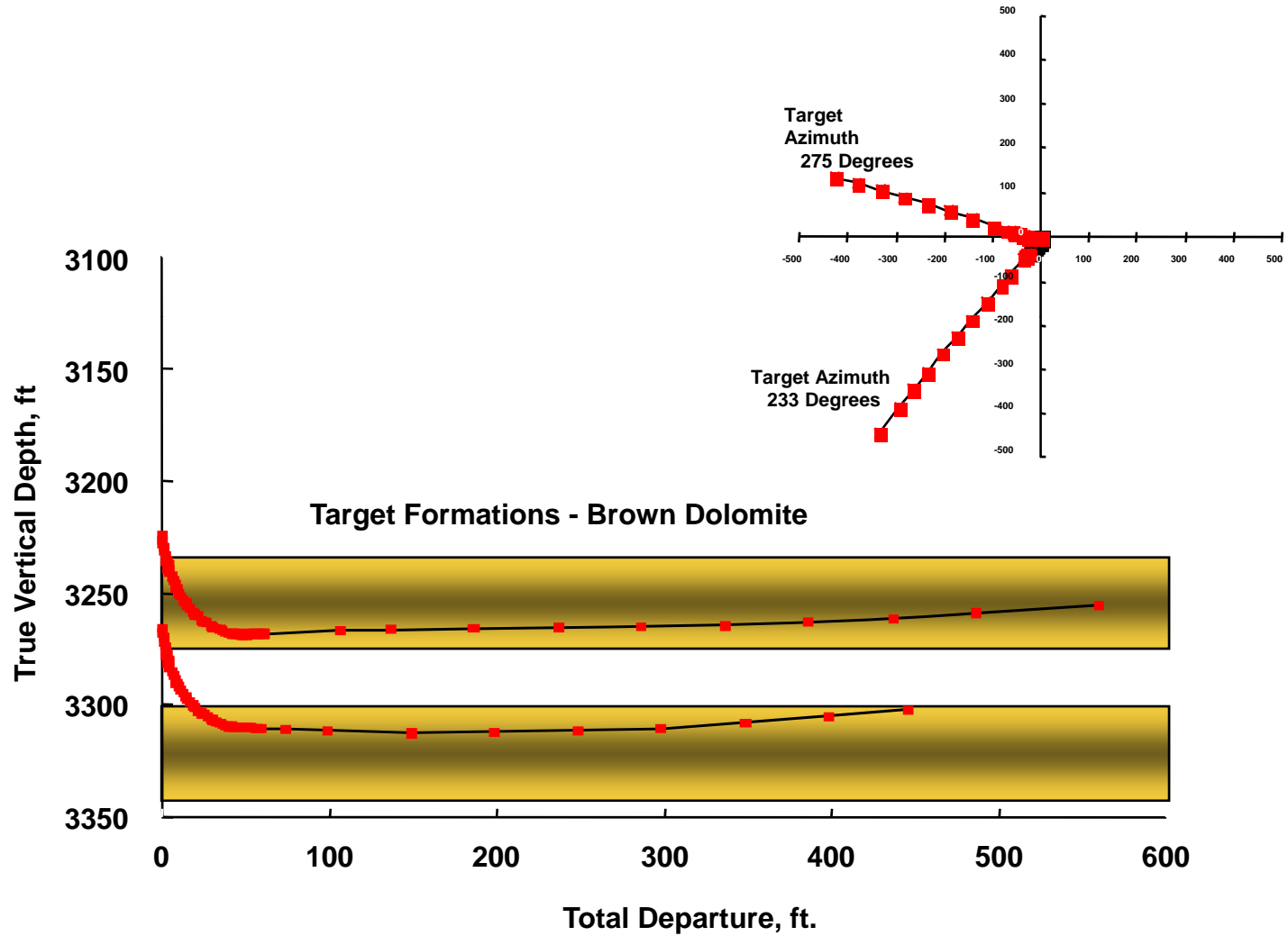


CHEVRON U.S.A.

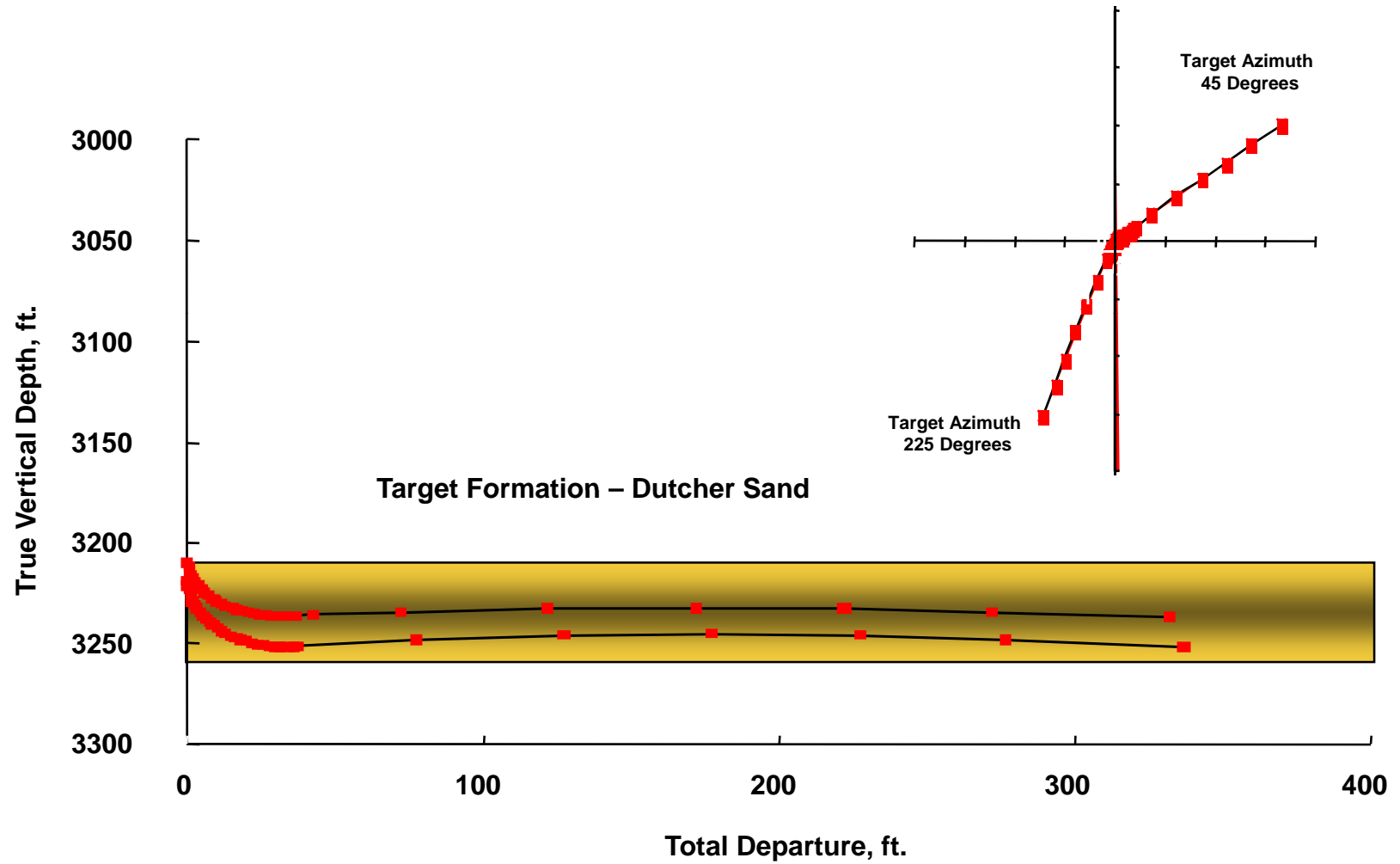
Kern County, California



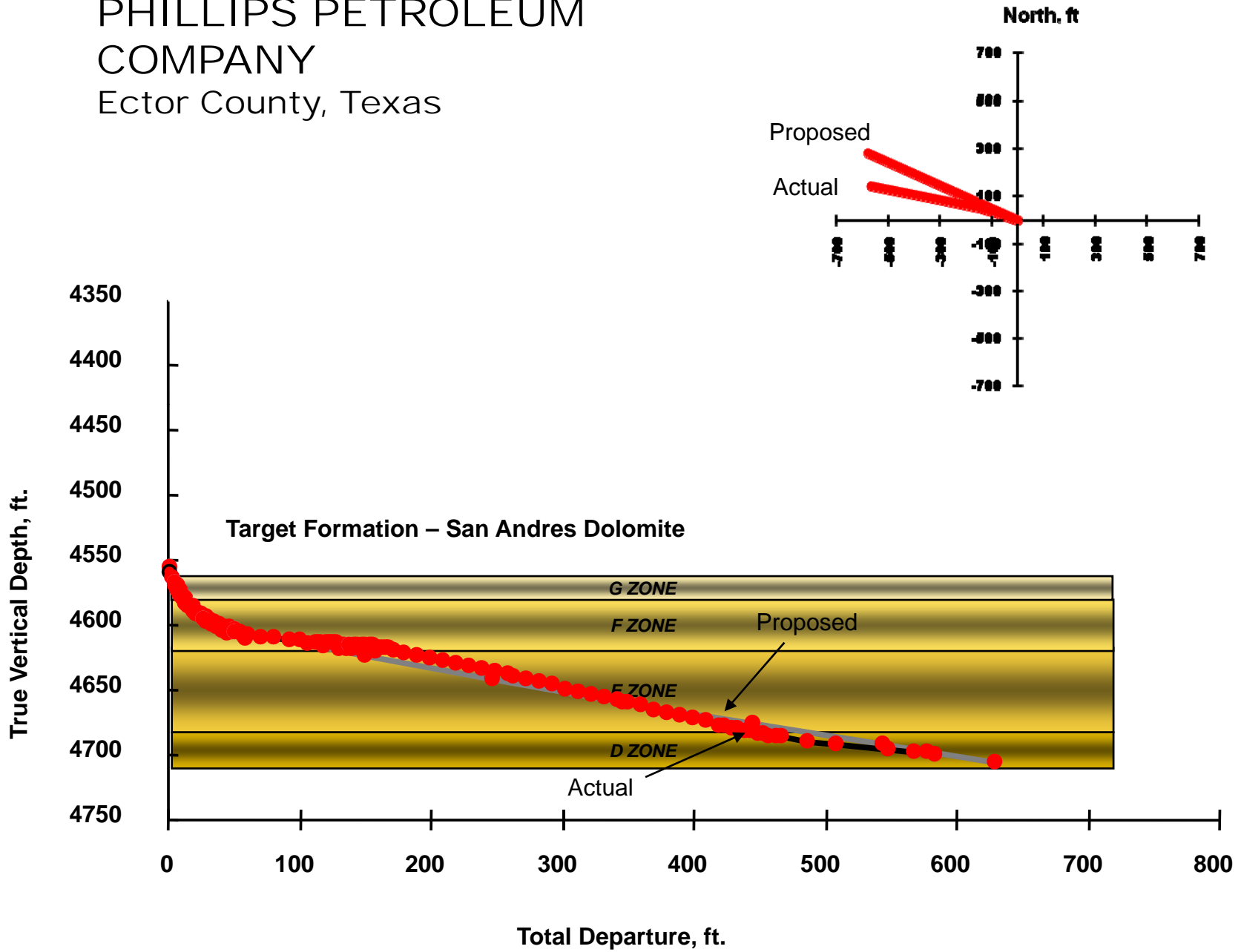
Texaco E&P
Hutchinson County, TX
Dual Lateral - Separate Zones



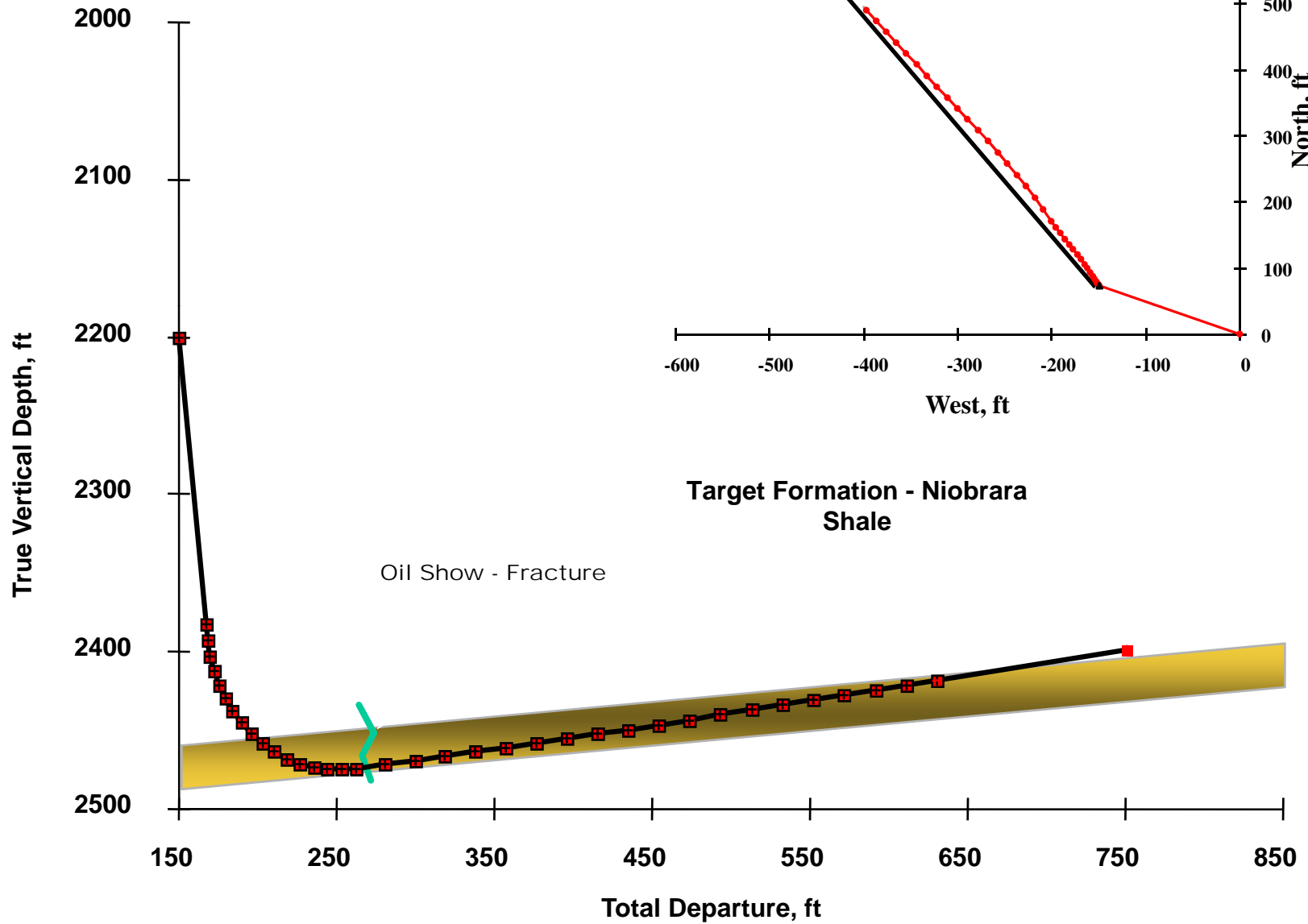
Oklahoma Natural Gas
Creek County, OK
Depew Gas Storage Field



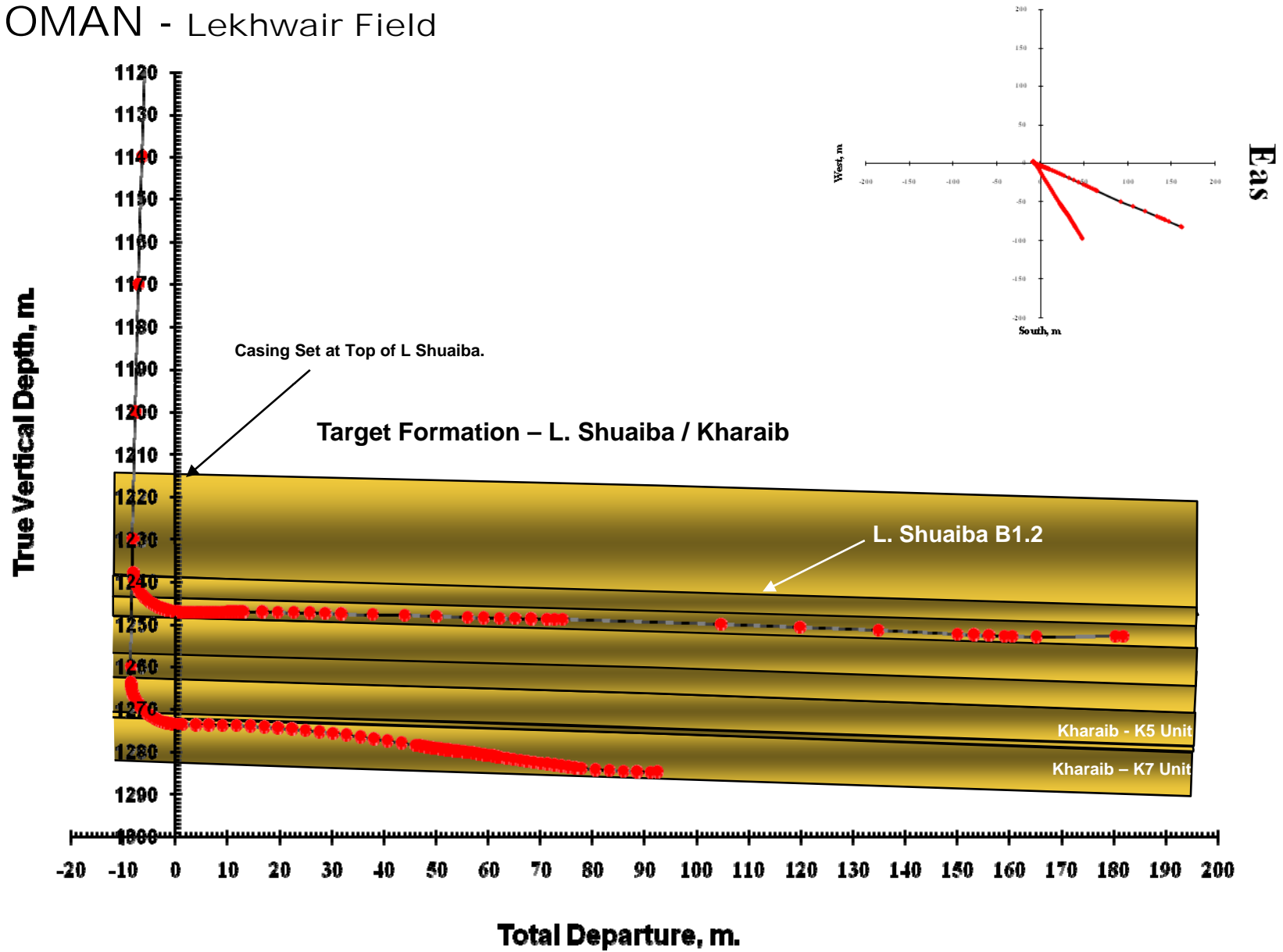
PHILLIPS PETROLEUM
COMPANY
Ector County, Texas



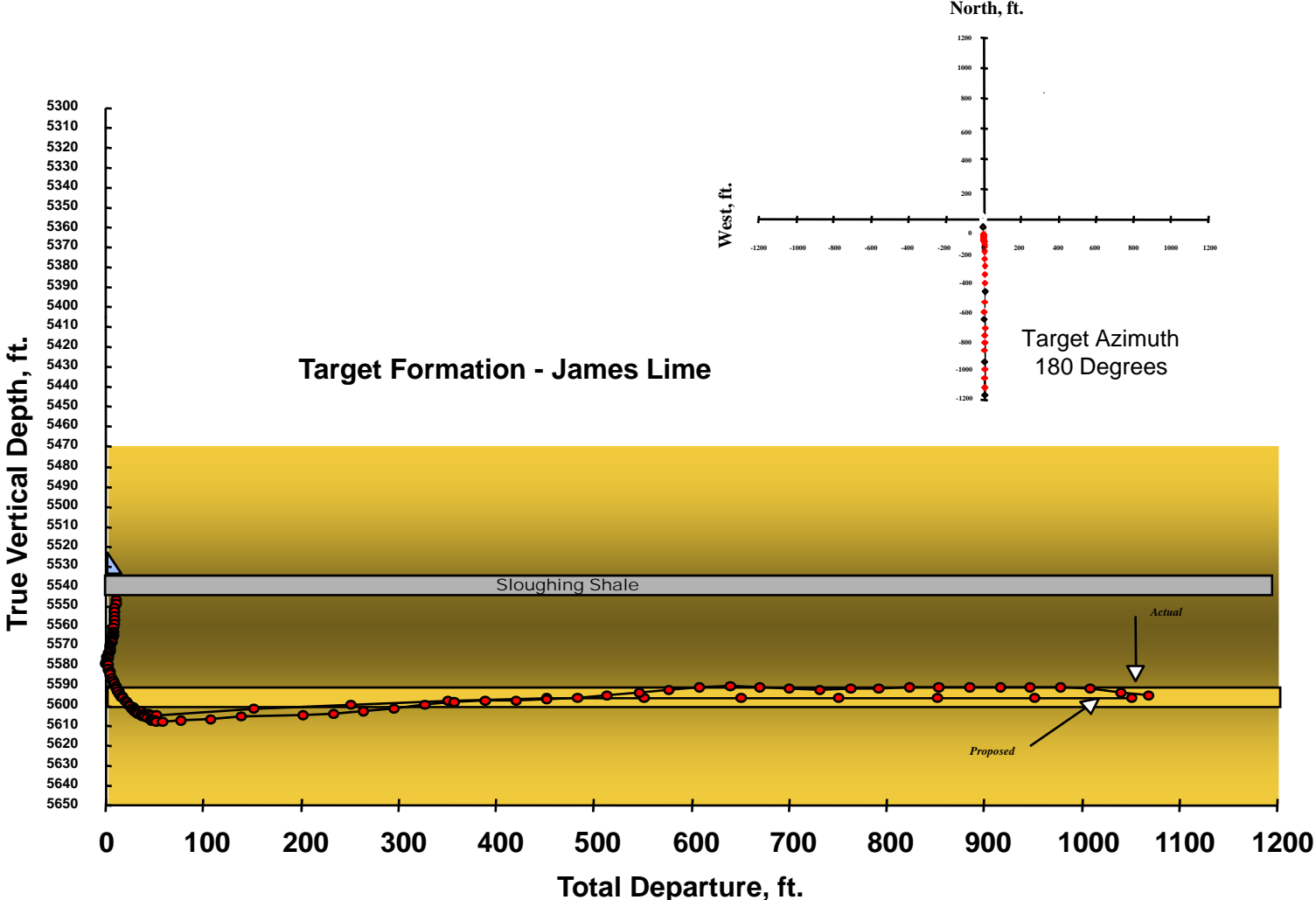
BP-Amoco
Teapot Dome, WY
Naval Petroleum Res.



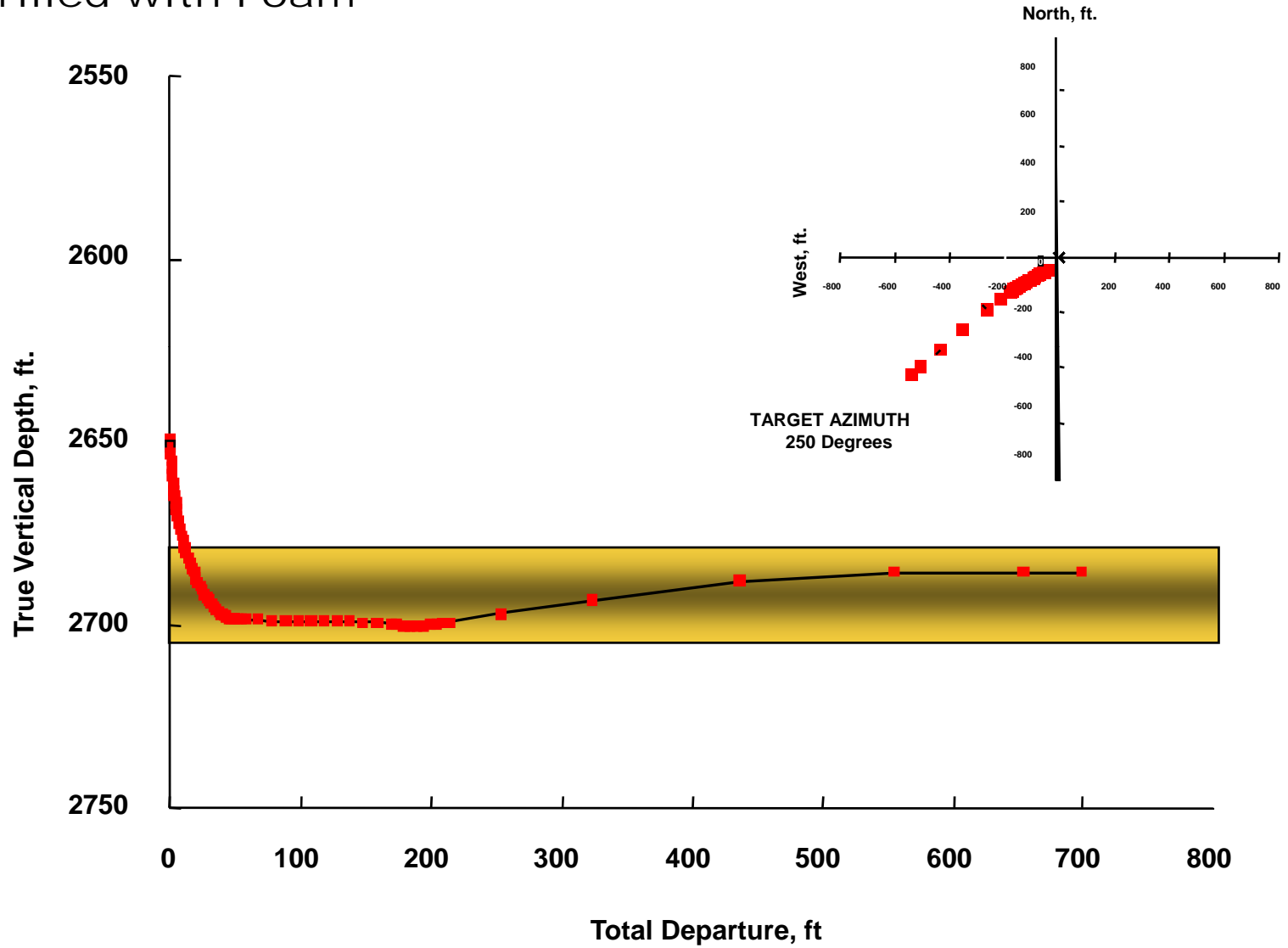
PETROLEUM DEVELOPMENT OMAN - Lekhwair Field



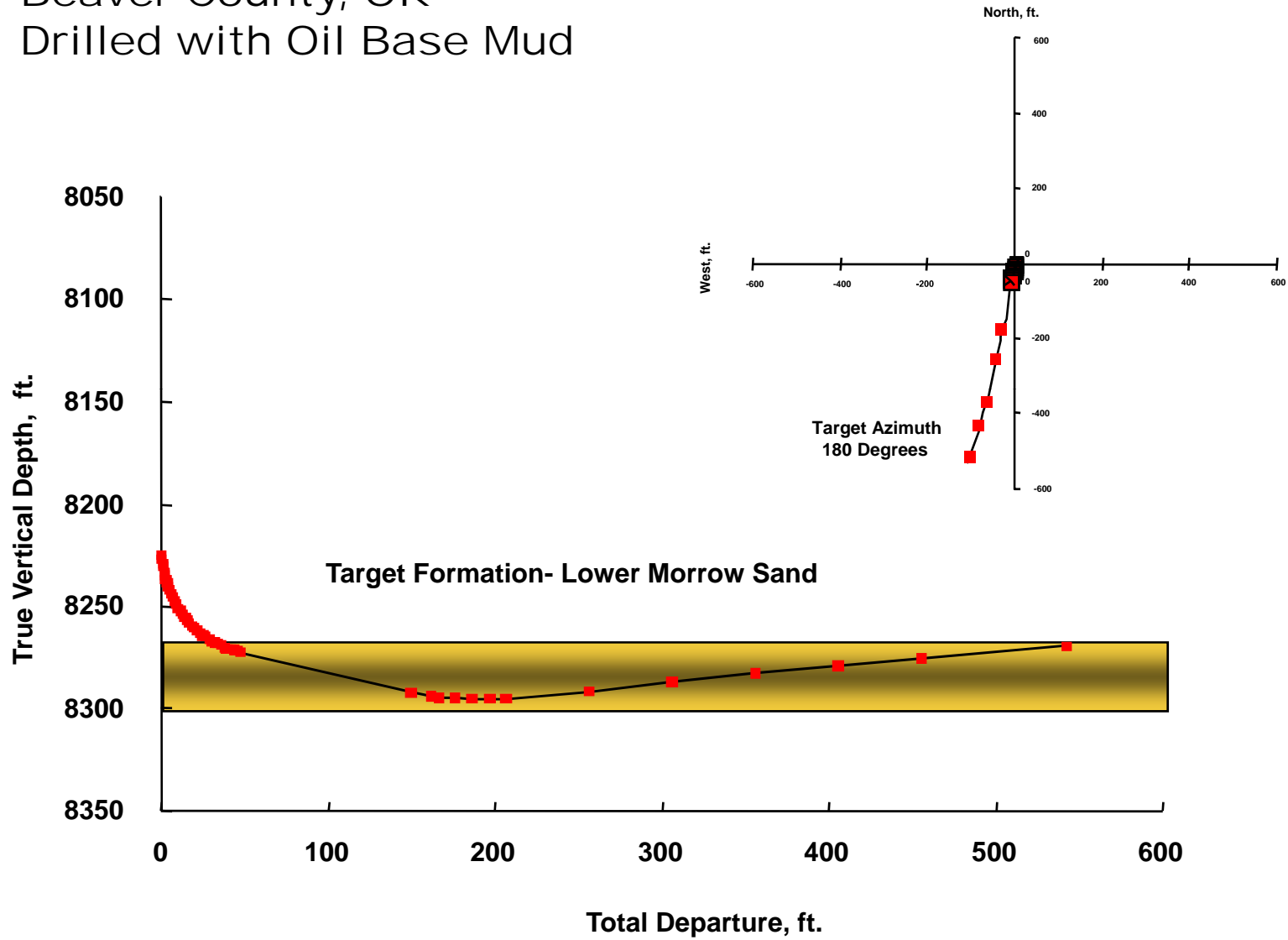
Texaco Exploration and Production Panola County, TX



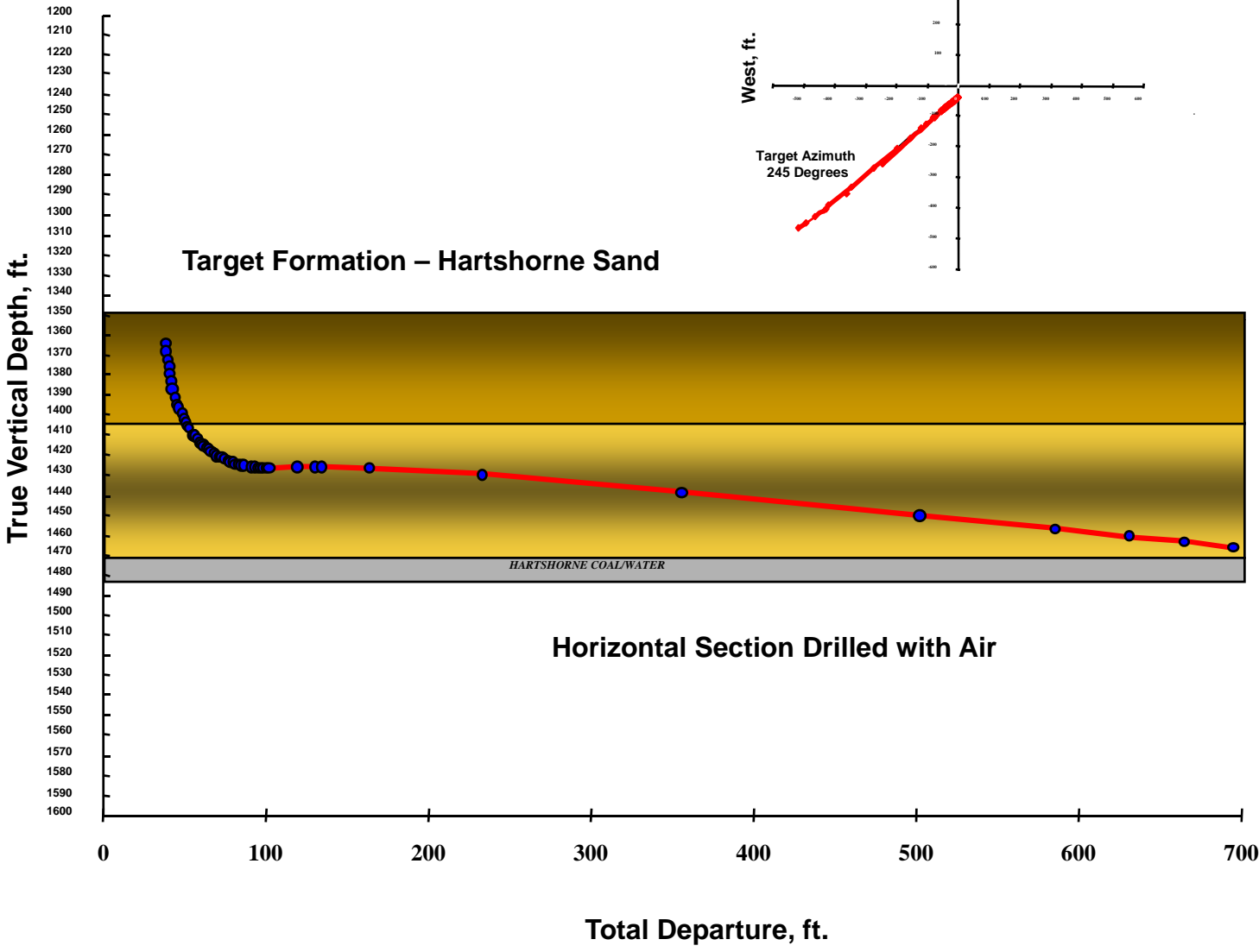
Oxy USA
Seward County, KS
Drilled with Foam



Trueblood Resources
Beaver County, OK
Drilled with Oil Base Mud



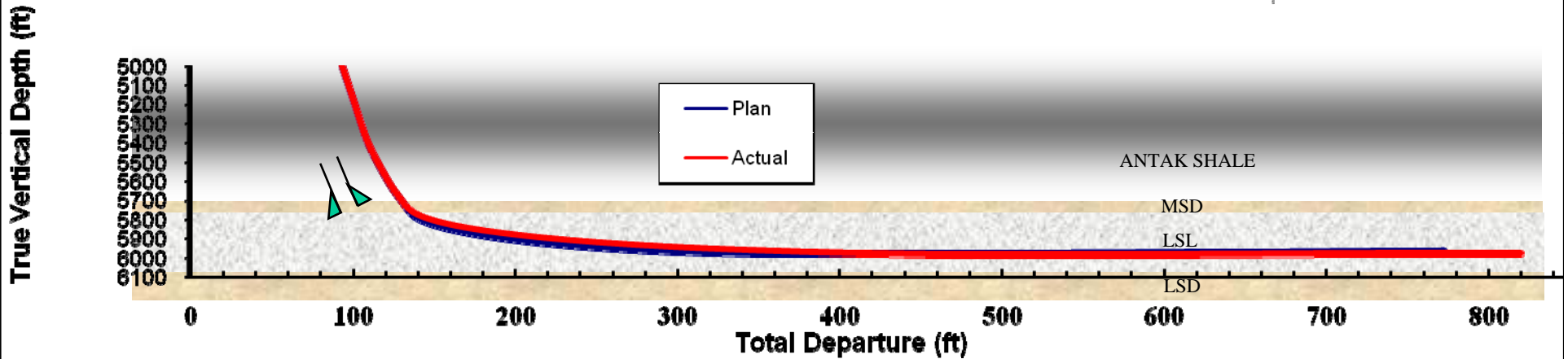
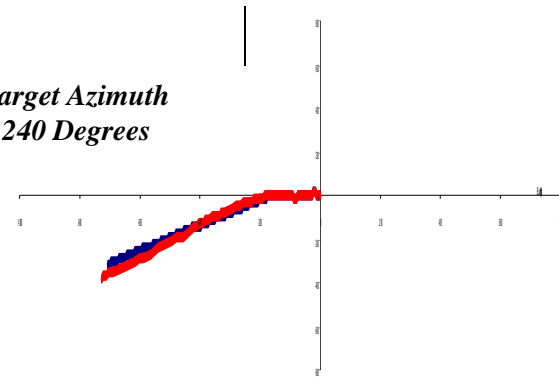
J.B. Drilling
Leflore County, OK
Drilled With Air Hammer



**PEMI – 2007 USR CAMPAIGN
SELMO-22 – Definitive Surveys**

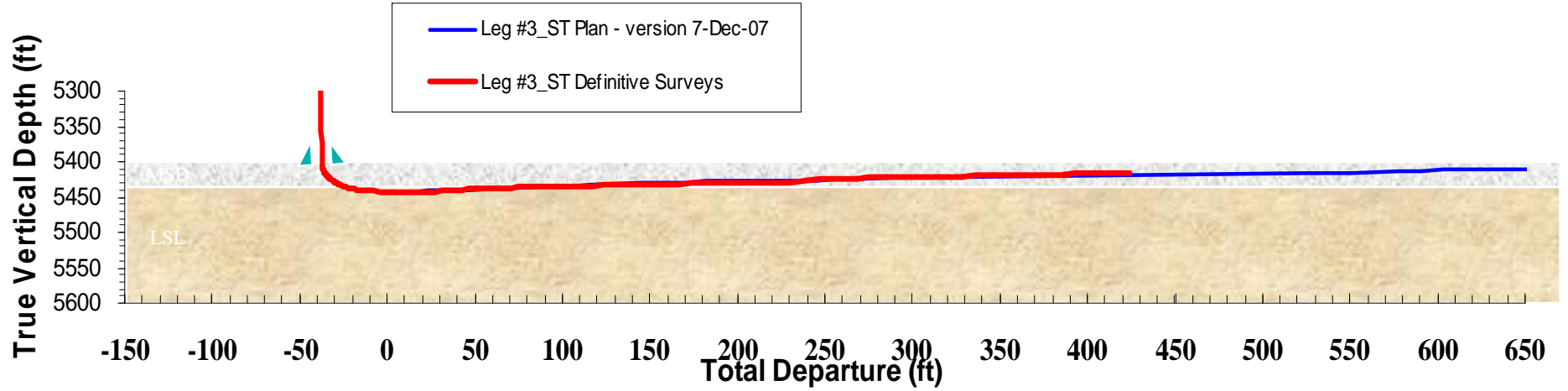
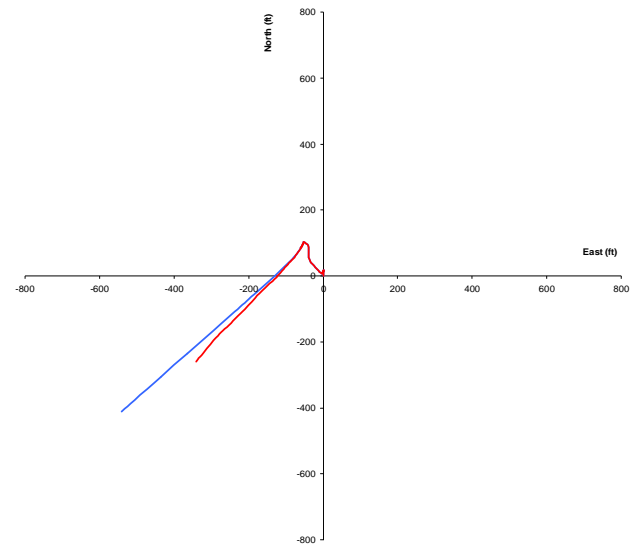
6550' Well TD, 6538' Survey Depth
Revised Landing from 5975' to 5980±5'TVD
Revision Based on Cutting Samples
Target Formation – Top LSD Drill Break

*Target Azimuth
240 Degrees*



Assumes no formation dip.

PEMI – 2007 USR CAMPAIGN
SELMO-36 USR3
DEFINITIVE SURVEYS
 Projected to 5898' Well TD, 5882' Last Survey Depth
 TD called when Top MSD unexpectedly encountered
Target Formation – High Porosity MSD



Oil and Natural Gas Corporation (ONGC) Mehsana Asset - Gujarat

